

PXiSE DER Management and Communication Platform

Cloud-native server that enables network modeling, and future planning and optimization of the entire grid.

The DER Management and Communication Platform helps utilities register, monitor, organize, and schedule the dispatch of customer distributed energy resources (DERs) including energy storage and solar PV via a cloud-native server running the IEEE 2030.5 standard protocol.

Visualize and manage customer DERs

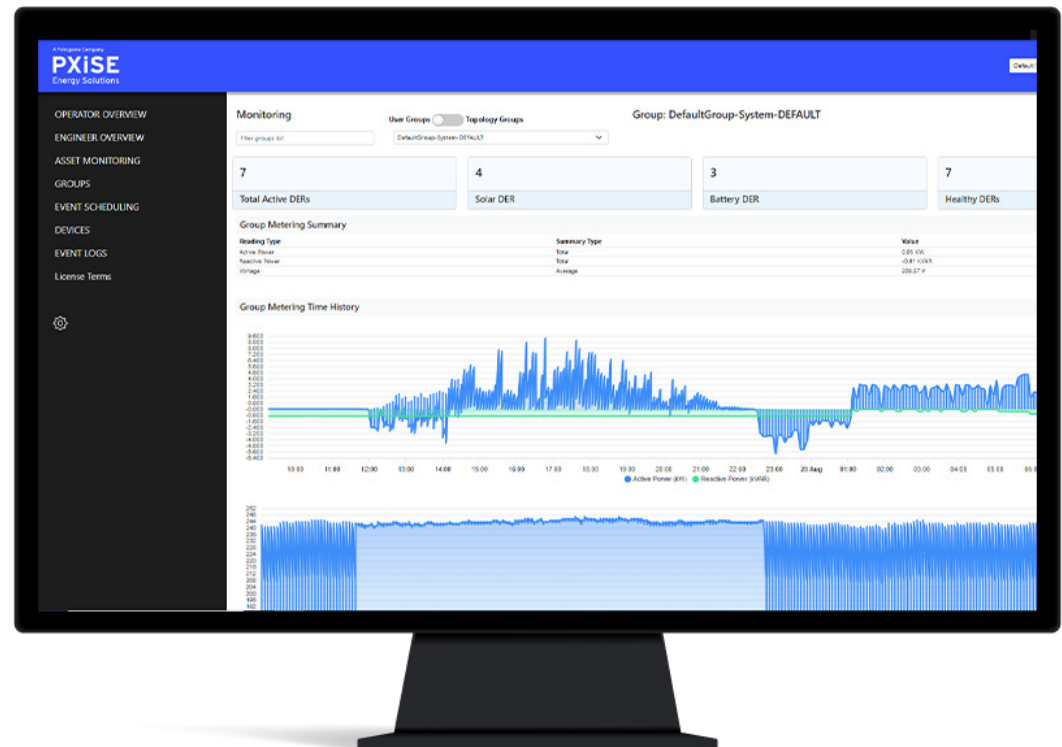
Gain visibility and management of your customer DERs.

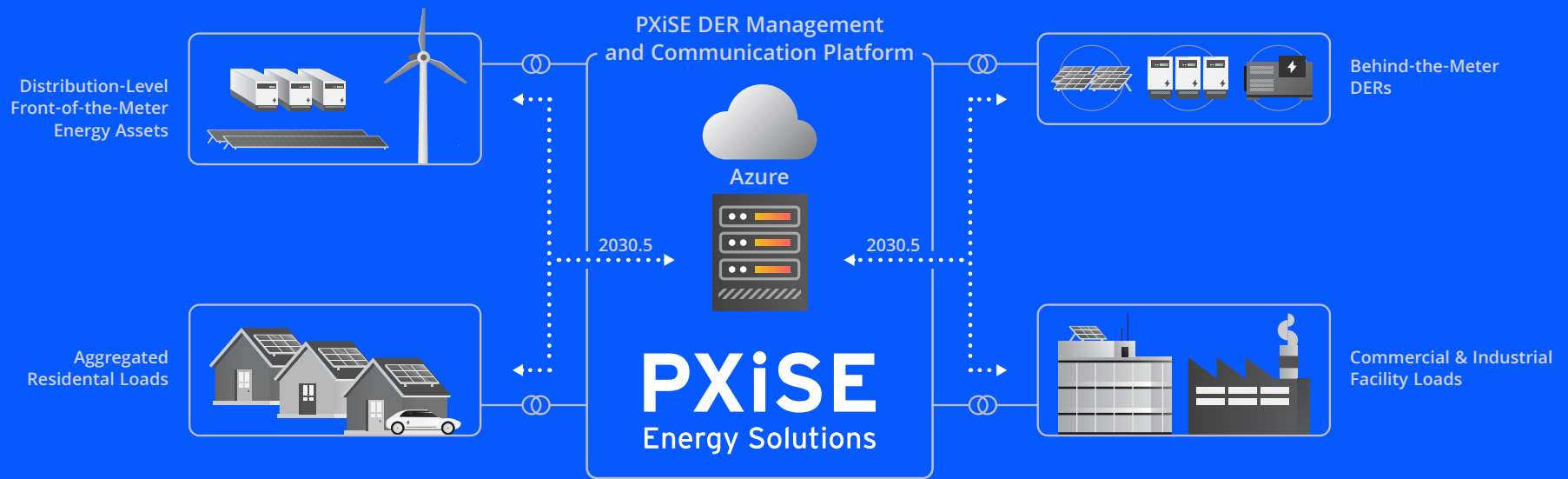
- Scalable, modular platform enables you to register, monitor, organize (group), and send control commands to any DER using the IEEE 2030.5 standard protocol
- User-friendly, web-based interface facilitates rapid user onboarding
- Identify the asset type, location, status, and associated consumption levels or storage availability
- Define customized DER groupings which can have independent business rules

Understand DER load profiles

Gain access to critical data about the power profiles of customer DERs on your system to help manage and shape the power grid.

- View metering status of registered DERs





Secure and consolidate customer DERs

Rely on one central command center to manage geographically dispersed DERs via a cloud environment with robust cybersecurity protocols.

- Leverage the elegance of the IEEE 2030.5 standard protocol which was purpose-built as a future-proof multipurpose Internet of Things (IoT) communication protocol
- Securely communicate in the cloud with thousands of DERs via robust encryption provided through an IP-based TLS1.2 standard with certificates and access control
- Secure data between the client and server as well as access to the user interface

- Meet and exceed security protocol standards for both physical and cyber threats and attacks
- Easily manage access to the user interface by user role

Expand hosting capacity and customer benefits

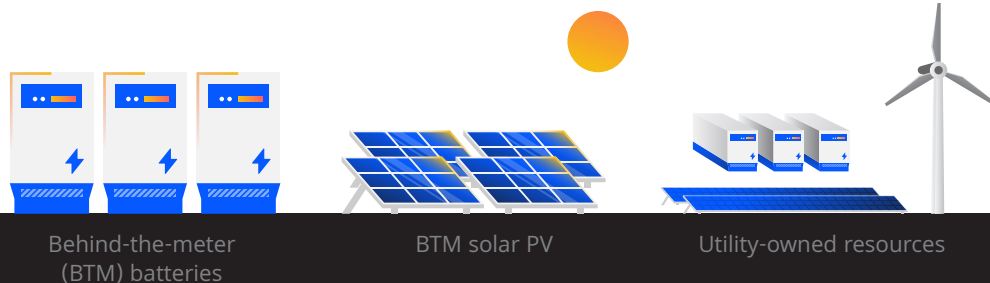
Use collected data to inform a comprehensive model of the distribution system that can enable the future development of customer-centric programs.

- View alerts and events by time stamp, unique identifiers, and log details
- Download historical reports for further analysis
- Schedule commands targeting different DER groups to analyze potential impacts

Prepare for future expansion

Access basic DER management functionality now that can be deployed quickly and widely to assist in immediate scheduling and dispatch of customer assets. Leverage data over time to determine key areas that would benefit from additional layers of autonomous control.

- Easy installation on Azure through Microsoft Marketplace
- Register DERs in the cloud



No limit to the number of controllable DERs

Visit pxise.com/dmx for more information.

